



PLUS MILL RS5 Premium

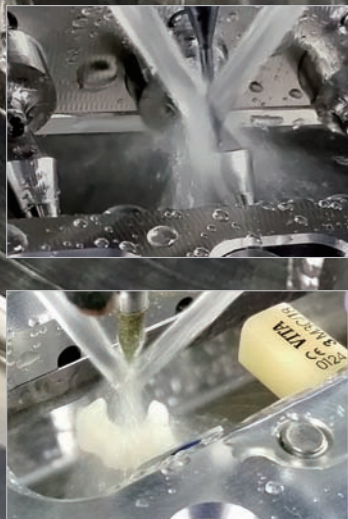
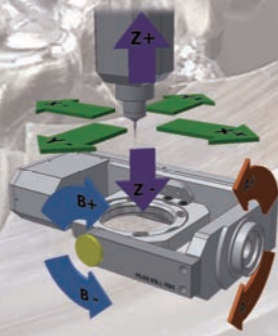
5-Axis Technology

5-axis milling system with servo and simultaneous controller, high-precision twin ball screws and harmonic drive

End products without undercuts

Possible to mill without a hitch even in any tilted angle as the intersection point of the two rotation axes is assembled precisely.

Maintain high strength and high precision consistently by using twin ball screws.







Disk jig

Possible to be equipped with a 98.5mm disk. Special-designed jig that can maintain high precision even after a long-time use due to its stable and durable features.



6P Glass multi jig

Possible to mill all kinds of glass ceramic regardless of the material and change disk jigs and block jigs without any difficulty. Increase productivity through its simultaneous milling of 6 block cubes.



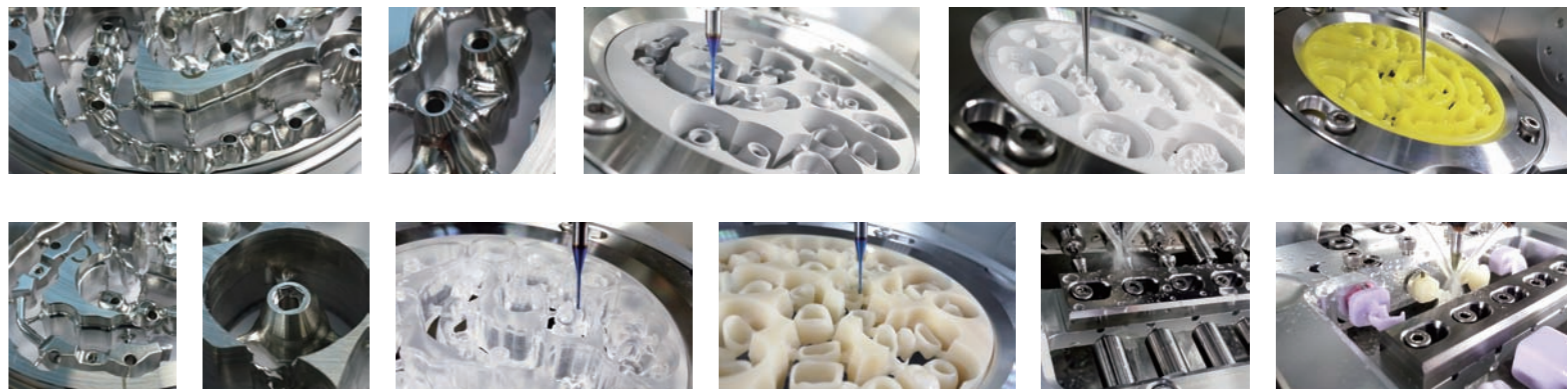
Premill multi jig

Possible to be equipped with 10 premill abutments all at a time and its simultaneous milling of 10 premill abutments can improve productivity for users. Users can mill their desired premill abutments as a variety of premill abutments are available.



8P Glass multi jig

Possible to simply change premill multi jigs to glass ceramic jigs and mill 8 block cubes simultaneously. Highly increase customers satisfaction through milling of the existing various kinds of glass ceramics.



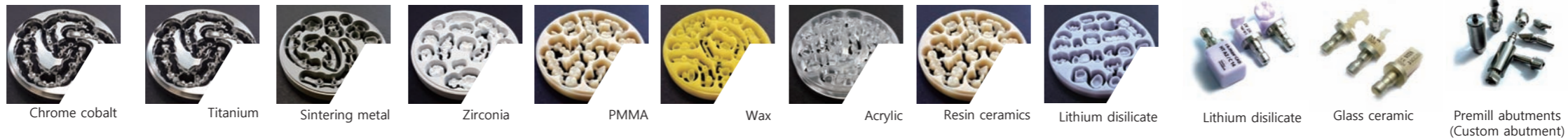
Range of applications

Milling type



Possible to mill more various types besides the mentioned types.

Material type



Possible to use more various types besides the mentioned types.



RS5 Technology

Fulfilling high quality end products

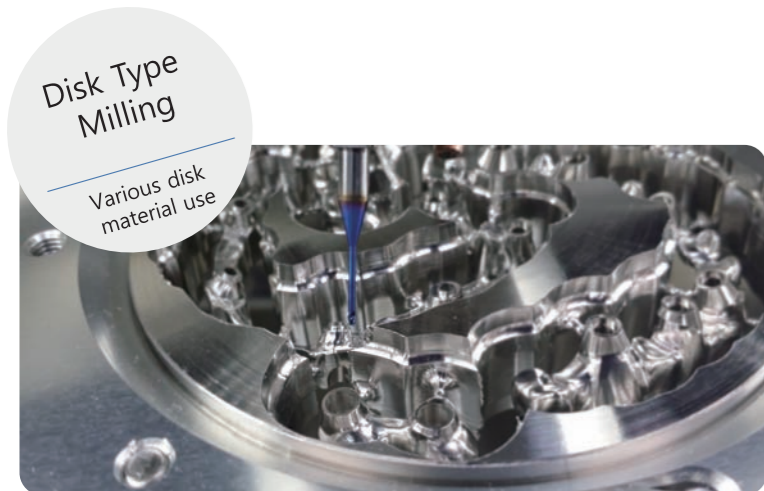
Developed based on our own technical expertise over many years.

Users can operate easily the complicated processes that are necessary in every process.



Touch Screen

Easy operation

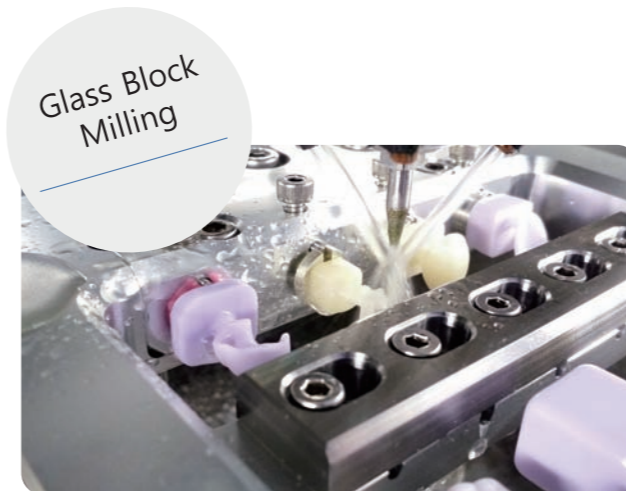


Disk Type Milling

Various disk material use



Premill Milling



Glass Block Milling



16 Tool Pocket

Sliding tool pocket

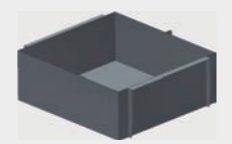
[5-Axis base]
Possible to mill a variety of material without difficulty due to the simple change of jigs.



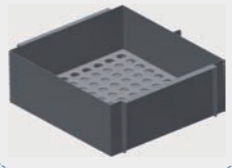
[Sliding tool pocket]
This sliding method of tool pocket helps to maintain the precision and increase the durability of the machine through protecting the tools from contaminated materials generated during milling. 16 various tools can be positioned.



[Dry-type conversion box]
Convert to the dry type easily by replacing the box for dry type in the drawer.



[Wet-type filter box]
Easy to clean and filter out milling chips through the milling chip filter box when milling metals.



[RS5 dedicated table]
This dedicated table can bear the weight of the machine stably. In addition, users can store the accessories and other materials in its 3 drawers.



[Twin ball screw system]
Designed to be suitable for high-intensity milling by using two precision ball screws. Using ball screws with the precision of



[Easy-to-use interface]
Easy operation for everyone and even a novice by providing an easy-to-use interface. Calibration can be done easily through the calibration wizard.



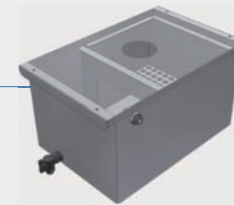
[Touch screen]
Provide a touch screen in order to use the milling machine simply without a keyboard and a mouse.



[E-stop]
Maintain its luxurious design even for the switch of an emergency stop.



[Digital air pressure gauge]
Check the air input with the digital method and stop processing or wait automatically if the air is insufficient or there is a problem with the air input.



[Large cutting oil tank]
Provide a large cutting oil tank and a filter cage to filter milling chips. Easy to clean milling chips and replace with new cutting oil without taking out the tank by using the cutting oil drain.



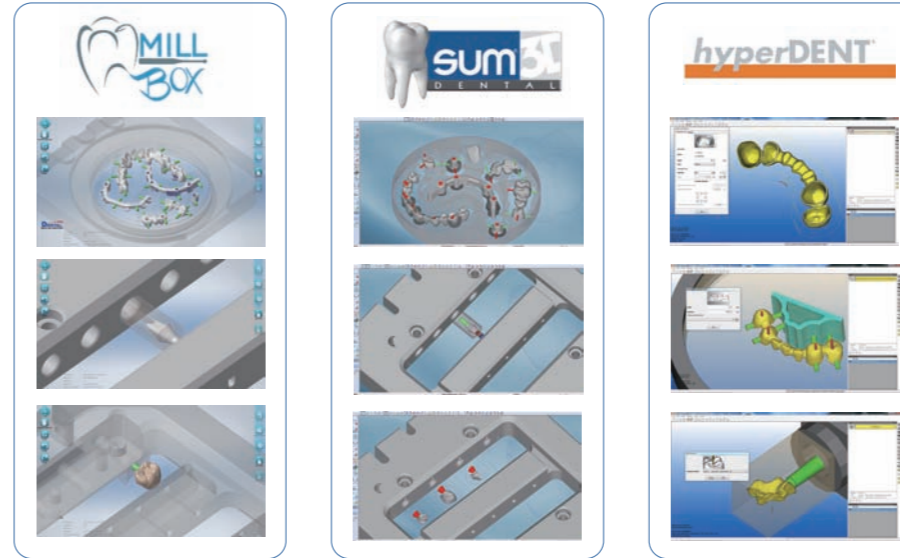
RS5 Components

RS5 milling machine



RS5 dedicated table

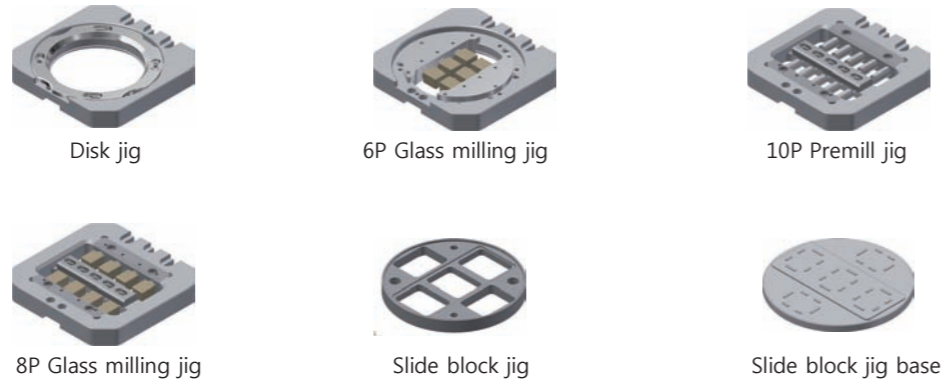
CAM Software included for RS5



Users can choose the CAM software and are provided the CAM software plus the milling strategy with RS5.



Jig




Wet and Dry Accessories



The design of the dust collector may be modified for upgrading its performance

Setup Kit (Sold separately)

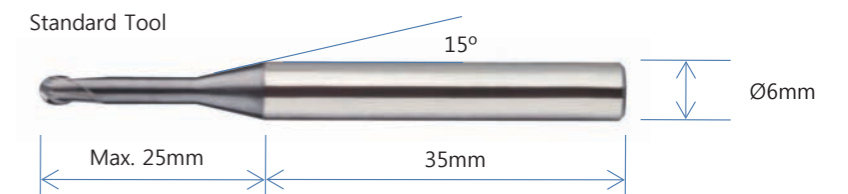
| | | | | | | |
|--|---------------------------|-----------------|-----|---------------------------------------|---------------------------------|-------------|
|  | Disk | Chrome Cobalt | 1ea | Endmill for Metal | Ball - Ø3mm, Ø2mm, Ø1.5mm, Ø1mm | 1ea on each |
| | | Sintering Metal | 1ea | | Flat - Ø1.5mm, Ø1mm, Ø0.5mm | 1ea on each |
| | | Zirconium | 1ea | | Flat round - Ø1.5mm, Ø1mm | 1ea on each |
| | | PMMA | 1ea | Ball endmill for Soft material | Ø2.5mm, Ø2mm, Ø1mm, 0.6mm | 1ea on each |
| | | WAX | 2ea | | | |
| | Lithium disilicate | | 3ea | Ball endmill for Glass ceramic | Ø2.5mm, Ø2mm, Ø1mm | 1ea on each |
| | Premill abutment | | 3ea | | | |

Tools

| | | | |
|------------------------------|------------------|------------------|--------------------|
| Soft Material Milling | Ball End Mill Ø2 | Ball End Mill Ø1 | Ball End Mill Ø0.6 |
|------------------------------|------------------|------------------|--------------------|

| | | | |
|---|------------------|----------------|----------------|
| Glass Ceramic Hybrid-Resin Milling | Diamond Bur Ø2.5 | Diamond Bur Ø2 | Diamond Bur Ø1 |
|---|------------------|----------------|----------------|

| | | | | | | | | | |
|----------------------|------------------|------------------|--------------------|------------------|--------------------|------------------|--------------------|----------------------|--------------------|
| Metal Milling | Ball End Mill Ø3 | Ball End Mill Ø2 | Ball End Mill Ø1.5 | Ball End Mill Ø1 | Flat End Mill Ø1.5 | Flat End Mill Ø1 | Flat End Mill Ø0.5 | Flat Round Mill Ø1.5 | Flat Round Mill Ø1 |
|----------------------|------------------|------------------|--------------------|------------------|--------------------|------------------|--------------------|----------------------|--------------------|



Accessories



Provide only for countries using 110V.

and
- Cutting Oil Filter
- Redundancy Bolts
- Etc.

The design of the accessories may be modified for upgrading its performance.

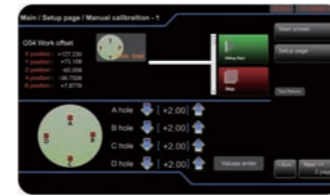
Possible to support for using more various tools besides the above tools depending on the milling types.



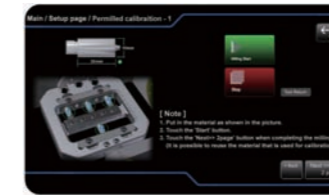
[Easy-to-use Interface]



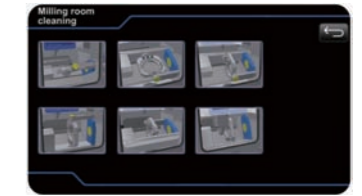
Plus Mill RS5 can be used for everyone without difficulty through its touch screen and easy-to-use interface. Simple conversion for wet and dry by touching the screen. Online checking is possible with our online technical support.



Machine calibration



Premill calibration (Custom abutment)



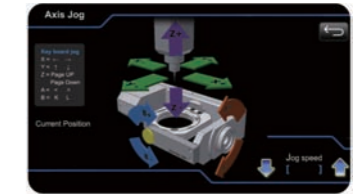
Cleaning positions



On / Out list of sensors and machine coordinates



G-Code view



Axis jog

[NC Data Transmission method]



NC Data

- LAN
- USB Wireless LAN (Wi-Fi)
- USB Memory



[External device control]

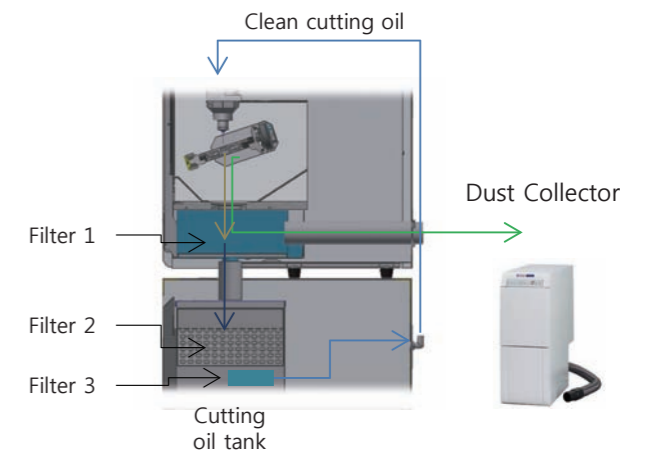


Coolant Pump Auto on/off control

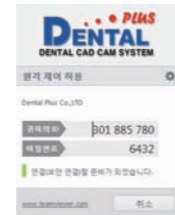
Dust Collector Auto on/off control



[Wet and Dry system]



[Online technical support method]



- LAN
- USB Wireless LAN (Wi-Fi)

Online technical support is possible by checking and controlling the machine through the internet.

Open system

Scanner & CAD software



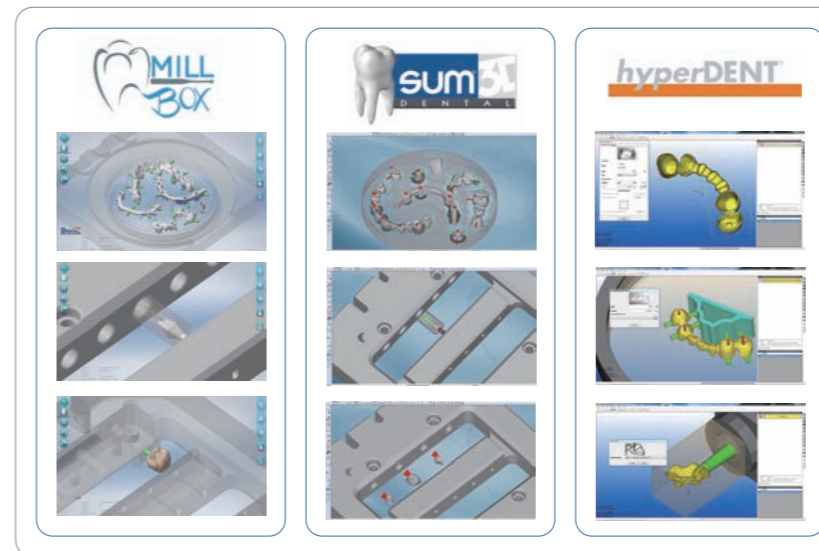
Design



.stl

CAM Software

Users can choose CAM software and will be provided CAM software plus the milling strategy with RS5.



Plus Mill RS5 milling machine



RS5 is compatible with all dental scanners and CAD Software as it is an open system.



Plus Mill RS5 Premium

Inside



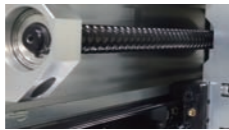
[Harmonic Drive]

Realize the precise angle of A and B axes and support stiffness by using the high-end precision reducer of harmonic drive.



[LM Guide]

Support for making the processed products that are suitable for metal milling by using the high-stiffness and high-precision guide. More durable and resistant to moisture due to the corrosion protection coating.



[Ball Screws]

Realize the position precision of below 5 by using the high-stiffness and high-precision ball screws.



[Servo System]

Use 200W servo motors in all axes.



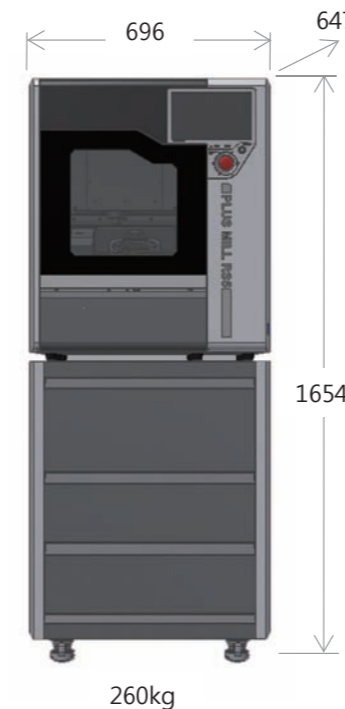
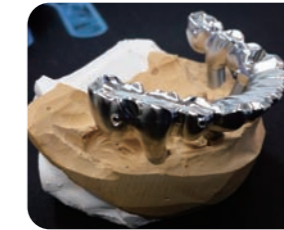
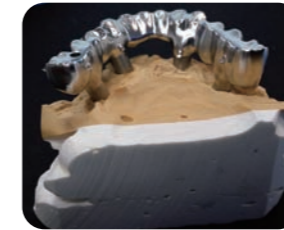
[Built-In Computer]

Equipped with a control PC and no need for a separate computer.



[Air Regulator & Separator]

Maintain the compressed air for necessary pressure. Filter the contaminated compressed air and supply the air to the machine to protect the spindle and internal devices.



| Product name | Plus Mill RS5 |
|--|-------------------------|
| Machine Dimension W x D x H (mm) | 696 x 647 x 800 |
| Machine Weight | 145kg |
| Table W x D x H (mm) | 696 x 647 x 854 |
| Table Weight | 115 kg |
| Number of Axes | 5 axes |
| Accuracy | ±5 |
| Motor Type | 200W servo motor 5 axis |
| Spindle Speed (rpm) | Max. 70,000 |
| Spindle Power | 1.2Kw |
| ATC Number of Tools | 16 |
| Voltage | 210~250V / 160W / 2.5A |
| Minimum Air Pressure | Min. 0.5 bar |
| Remote Maintenance | Application |
| Automatic Tool Length Measurement with broken tool detection | Application |
| Filtering Step | 3 steps |
| Coolant Tank Capacity | 20 |
| Internet | Application |
| Touch Screen Control | Application |
| Disk and Multi Jig – Changeable | Application |
| Wet Process | Application |
| Water Pump Control | Application |
| Dry Process | Application |
| Dust Collector | Application |
| Outside Dust Collector Vacuum Control | Application |